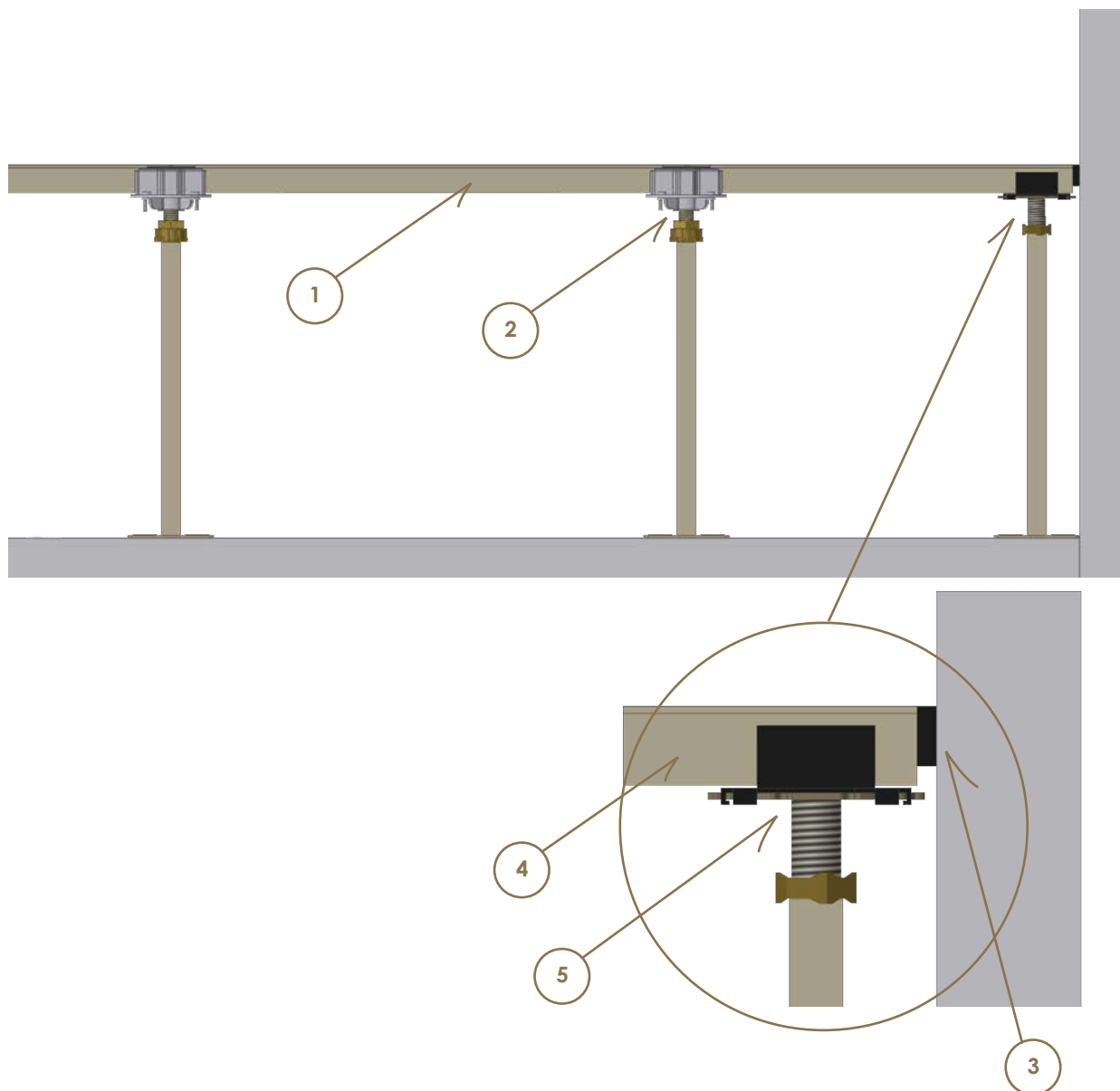


Architectural Details

Perimeter Detail 150-600mm from Perimeter

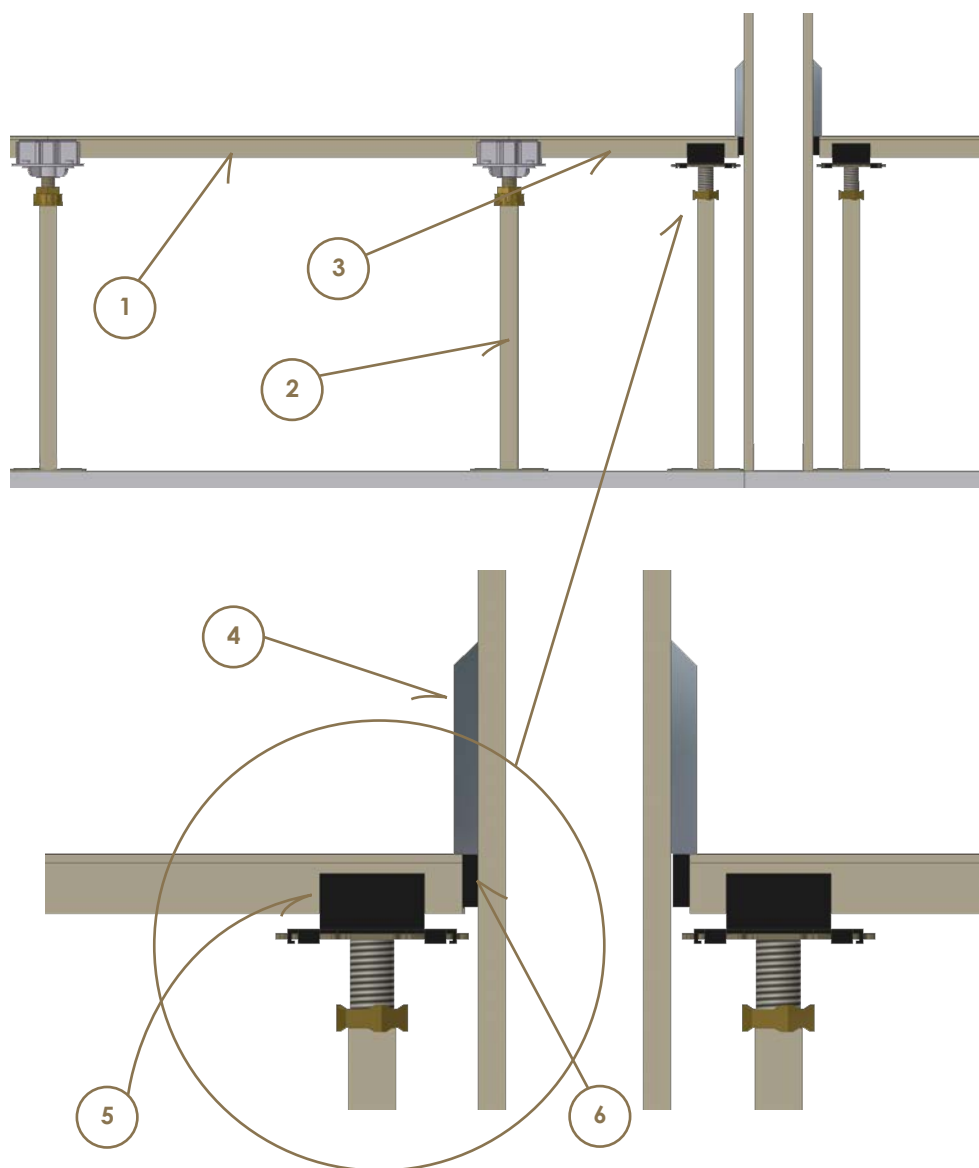


ITEM

DESCRIPTION

- | | |
|---|---|
| 1 | 600 x 600 full size panel |
| 2 | Field Pedestal: S1, S3, S5, S11 - Depending on required FFH |
| 3 | Sponge rubber buffer to infill perimeter sill |
| 4 | Perimeter panel cut down to required length |
| 5 | Perimeter Pedestal; S2, S4, S6, S11 - Depending on required FFH |

Plasterboard Wall Perimeter Detail

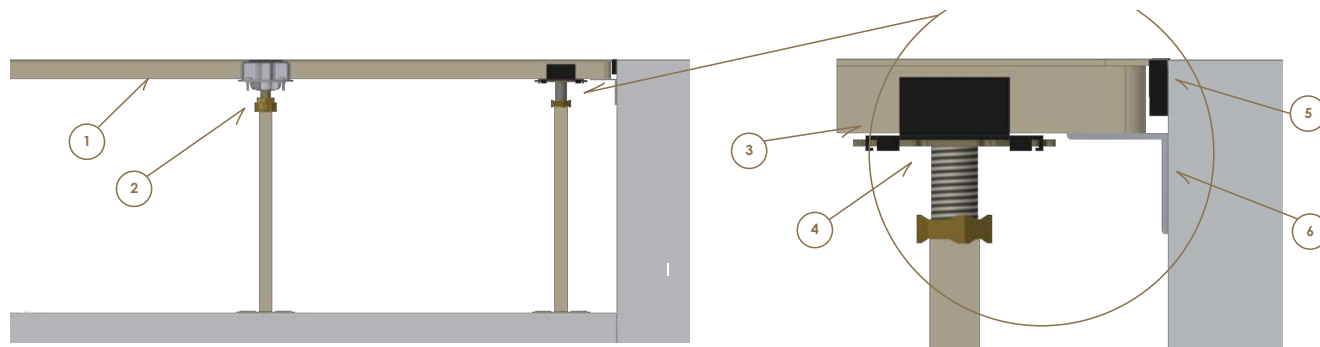


ITEM

DESCRIPTION

- | | |
|---|---|
| 1 | 600 x 600 full size panel |
| 2 | Field Pedestal: S1, S3, S5, S11 - Depending on required FFH |
| 3 | Perimeter panel cut down to required length |
| 4 | Skirting |
| 5 | Perimeter Pedestal: S2, S4, S6, S11 - Depending on required FFH |
| 6 | Sponge rubber buffer to infill perimeter sill |

Curb Detail - Option 1

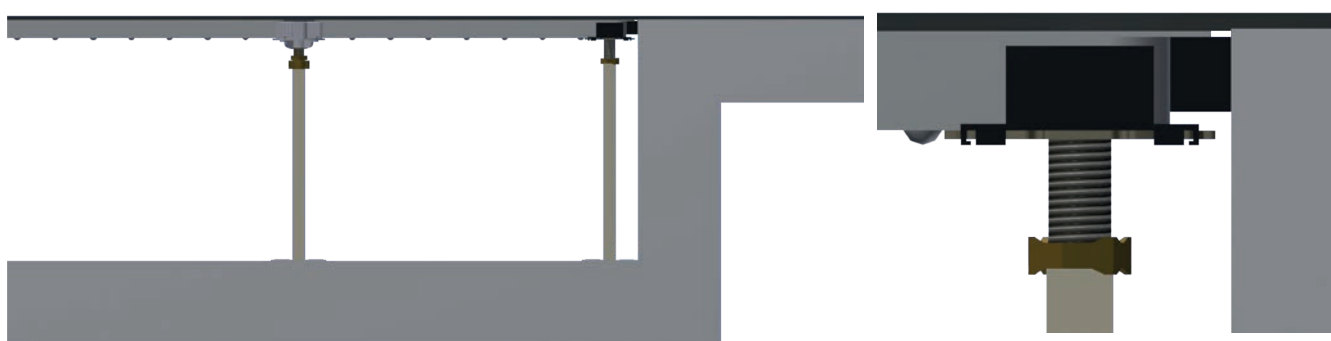


ITEM

DESCRIPTION

- | | |
|---|---|
| 1 | 600 x 600 full size panel |
| 2 | Field Pedestal: S1, S3, S5, S11 - Depending on required FFH |
| 3 | Perimeter panel cut down to required length |
| 4 | Perimeter Pedestal; S2, S4, S6, S11 - Depending on required FFH |
| 5 | Sponge rubber buffer to infill perimeter sill |
| 6 | 45 x 45mm structural angle |

Curb Detail - Option 2

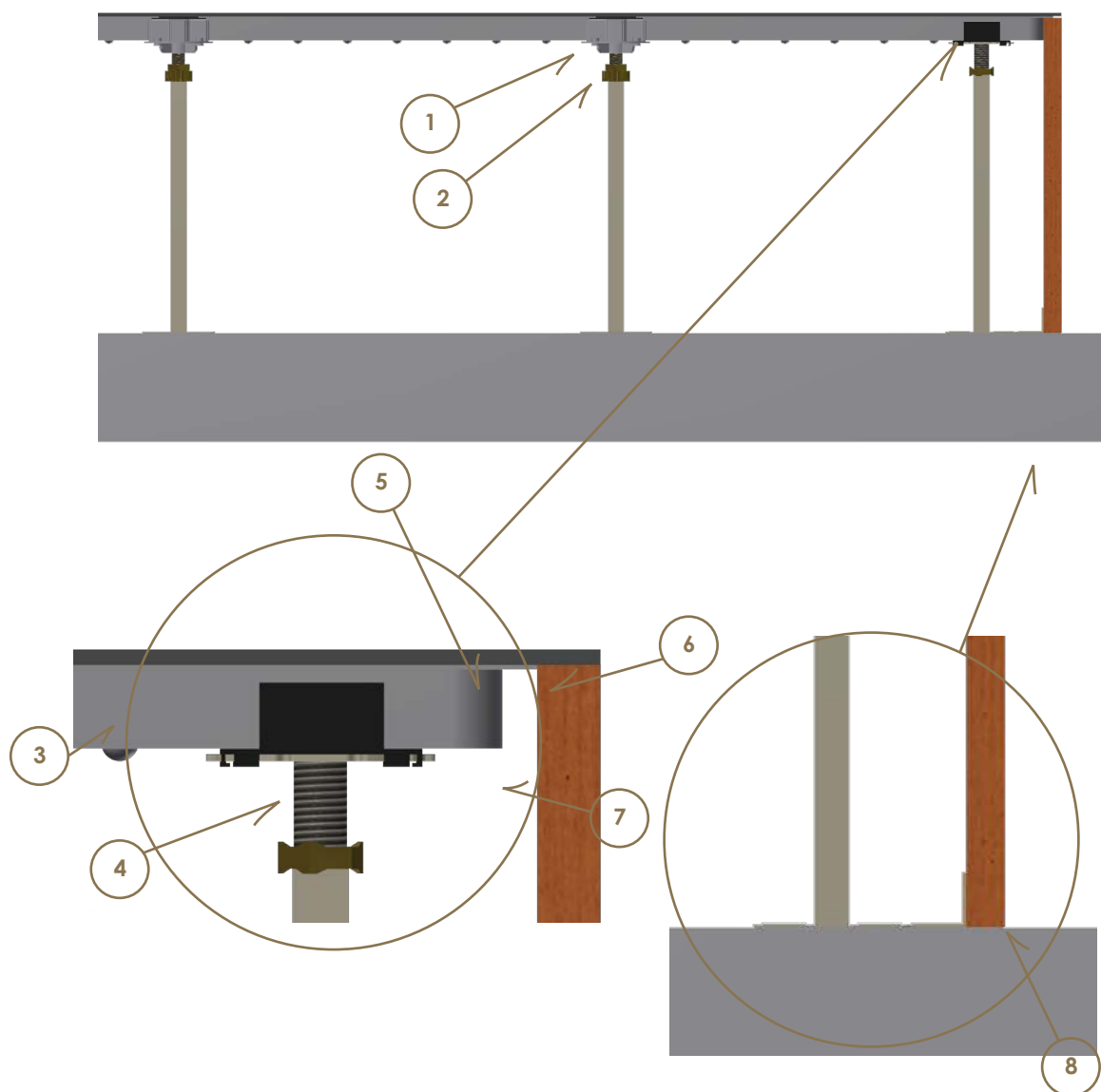


ITEM

DESCRIPTION

- | | |
|---|---|
| 1 | 600 x 600 full size panel |
| 2 | Field Pedestal: S1, S3, S5, S11 - Depending on required FFH |
| 3 | Perimeter panel cut down to required length |
| 4 | Perimeter Pedestal; S2, S4, S6, S11 - Depending on required FFH |
| 5 | Sponge rubber buffer to infill perimeter sill |

Proprietary Fascia Detail



ITEM

DESCRIPTION

- | | |
|---|---|
| 1 | 600 x 600 full size panel |
| 2 | Field Pedestal: S1, S3, S5, S11 - Depending on required FFH |
| 3 | Perimeter panel cut down to required length |
| 4 | Perimeter Pedestal: S2, S4, S6, S11 - Depending on required FFH |
| 5 | Screw Fix |
| 6 | Step Tread |
| 7 | Panel Fascia |



Standard Ramp Detail

Ramp Building Recommendations

Ramp Slope

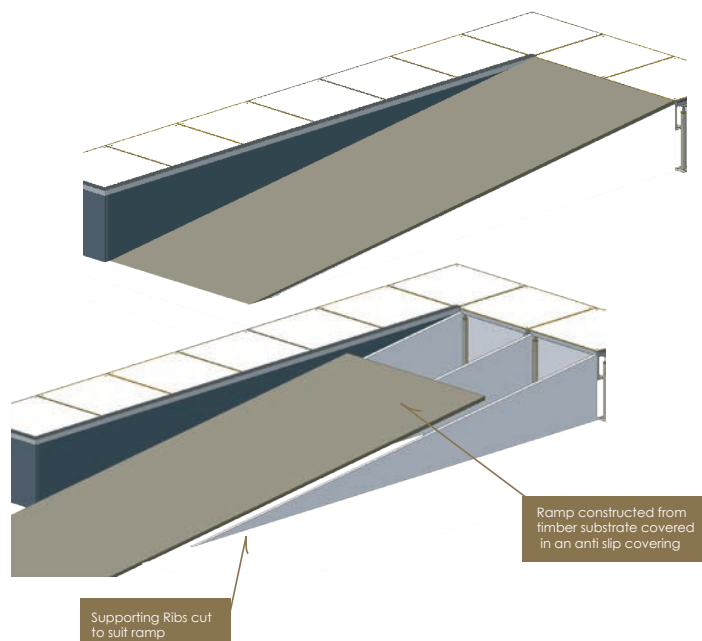
1. A slope no greater than 1:8 when under 1.5m long, or 1:14 if between 1.5m and 9m long.
2. A landing at the top that is 1m wide by 1.33m long for ramps with a 1:8 slope, or 1.2m long for a 1:14 ramp slope.
3. A smooth transition to their landings and adjoining walkways.

Ramp Size

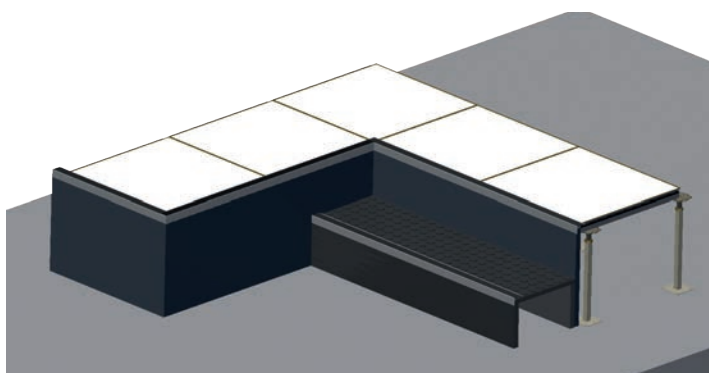
Ramp width should be in 600mm increments, therefore allowing for the use of a full panel.

Application

This typical standard ramp details can be used for our entire access floor range.

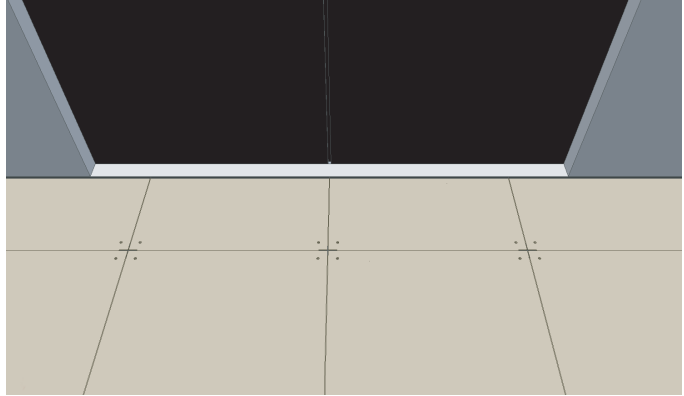


Standard Step Detail



Access Floor onto Lift Door Threshold

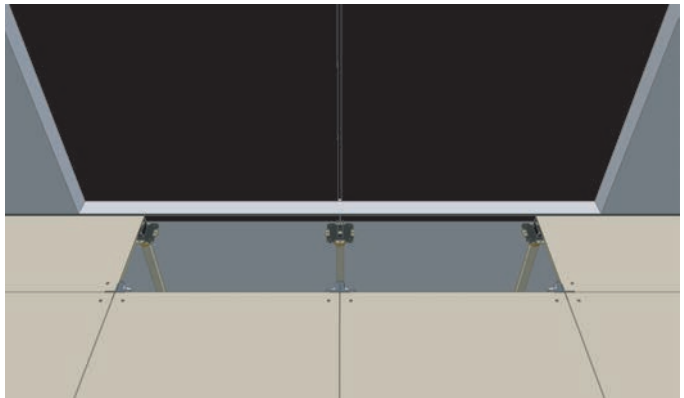
Finished Detail



Option 1

Use of perimeter pedestals to support panels at edge

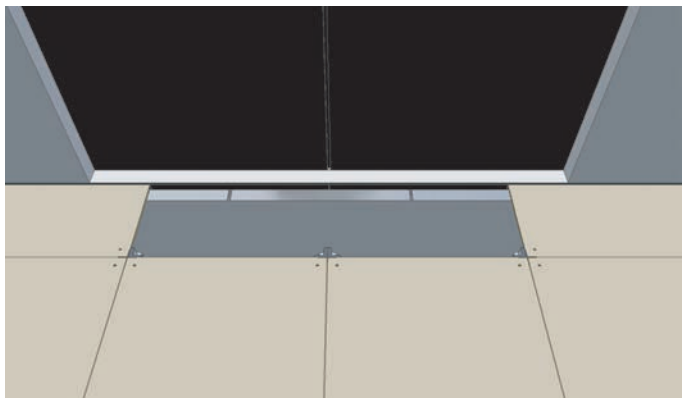
Where the access floor meets a threshold, the access floor panels is supported using perimeter pedestals.



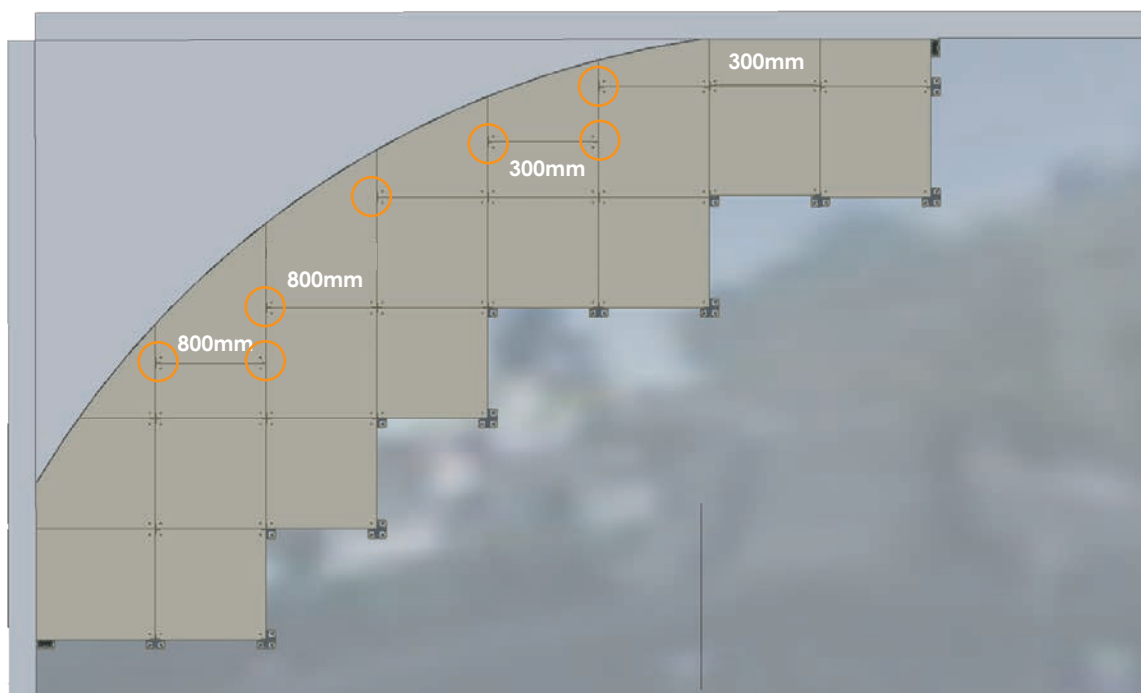
Option 2

Using alloy angle to support panels

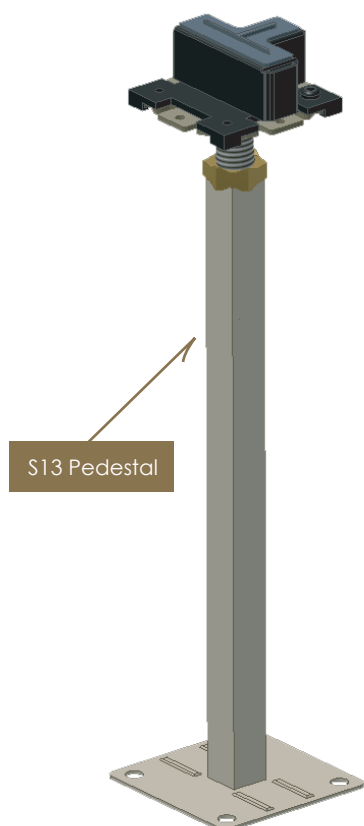
If the structure and design do not allow for a perimeter pedestal to be used, a steel angle can be used to support panel.



Radial Wall Detail



Radial Wall Detail using 800 and 300mm panels



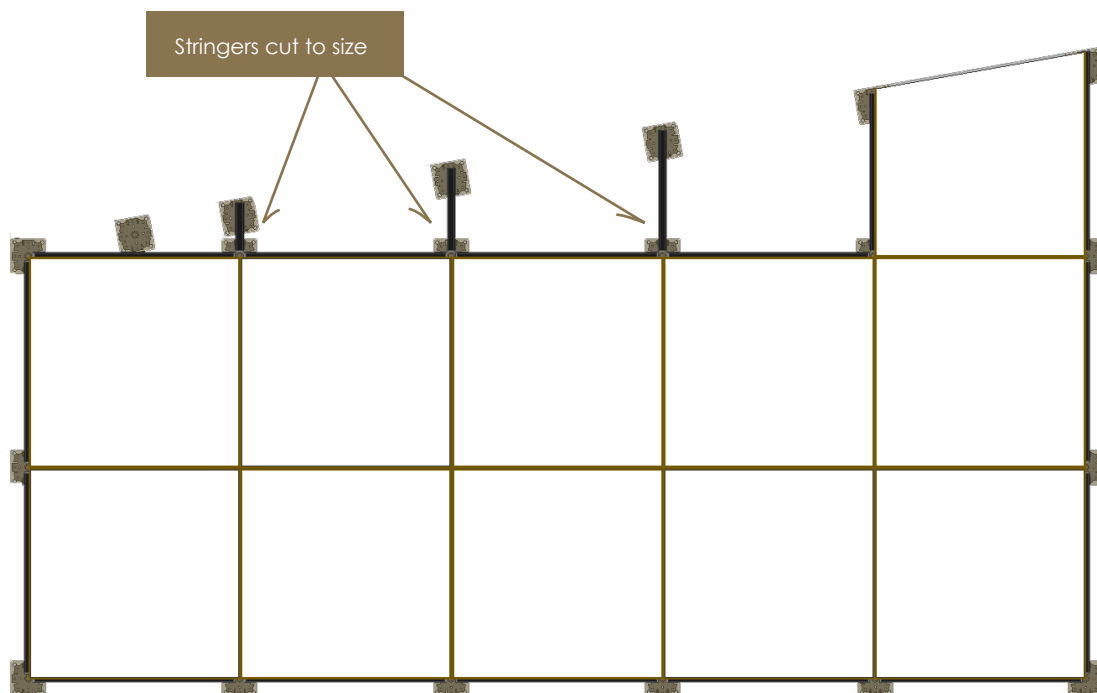
Details

In order to minimise wasted panels and to ensure panel integrity in these areas, the use of 300mm and 800mm finishing panels can be used in conjunction with the standard 600mm panels. Using these differing sized panels with the S13 Pedestal allows for full panels to overlap some supporting pedestals, allowing for the use of different sized panels to minimise cuts and wastage.

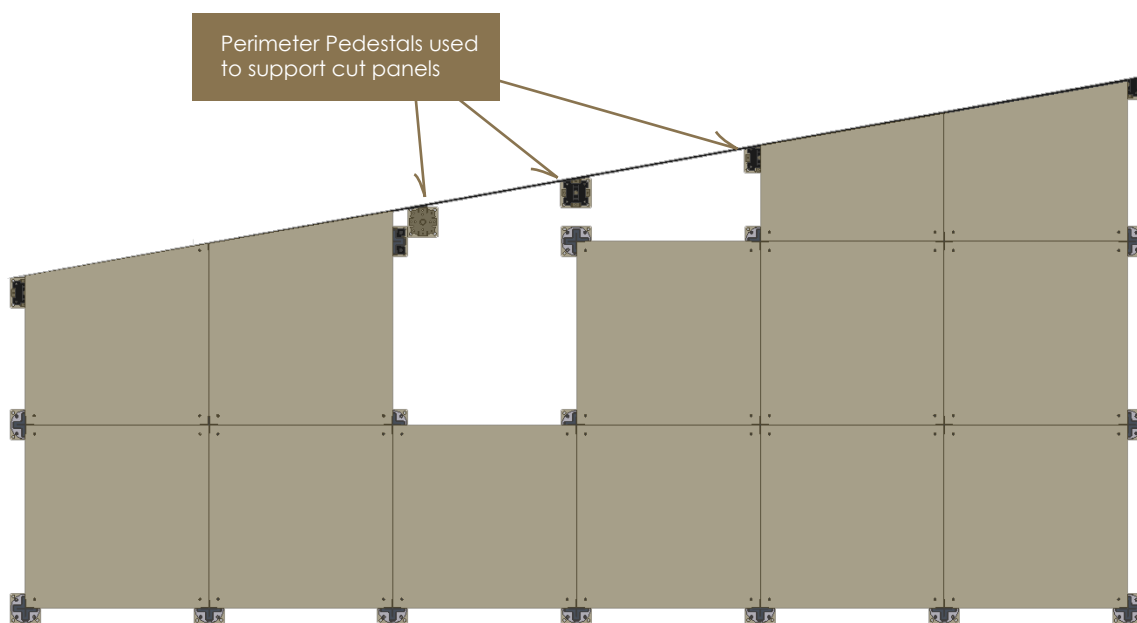
Using the S13 pedestal in situations as above, 300, 600 and 800mm panels can be supported in off grid positions.

Angled Perimeter Wall

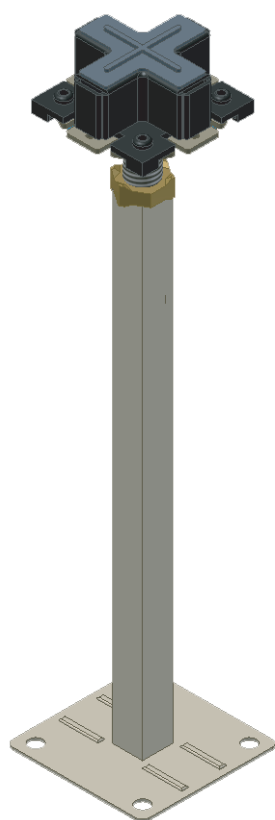
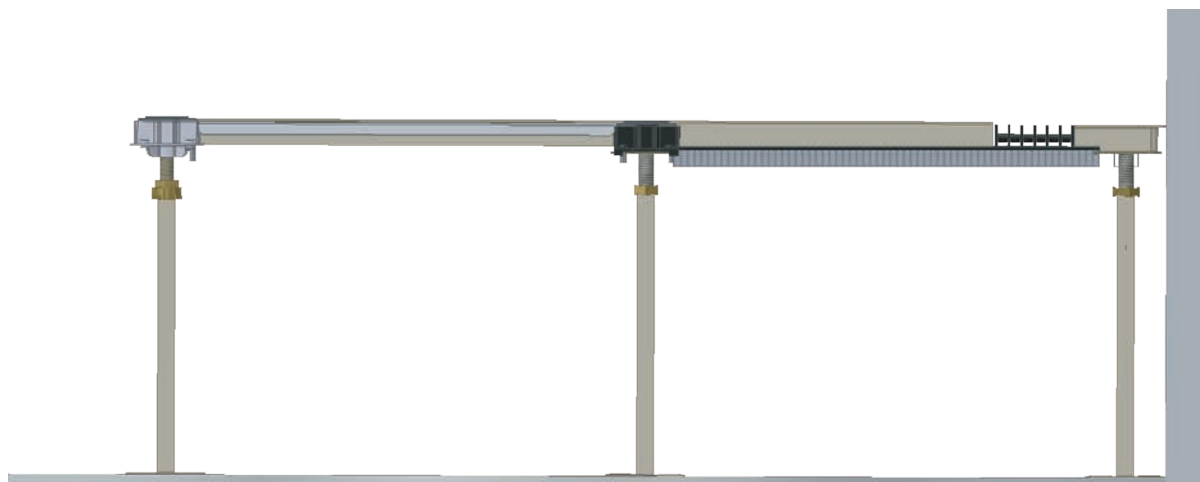
Rigid Grid System:



Ultrafix System:



Converting from Ultra Fix to Rigid Grid System

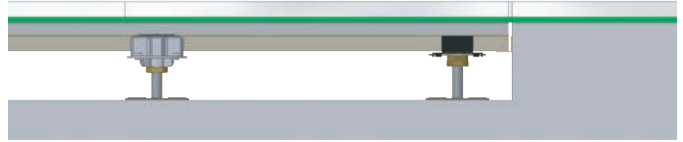


S12 UVF Plastic Head

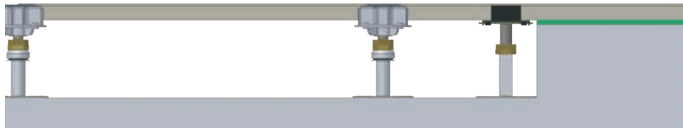
The S12 UVF Plastic Head allows the conversion from air tight ultra fix system to stringered system. This is also useful in situations where there are continuous air grilles (as shown).

Floor Covering from on Grid to Slab Detail

Where the access floor surface is in line with a subsurface obstruction, fibrous cement can be used to pack the floor finish to required height.

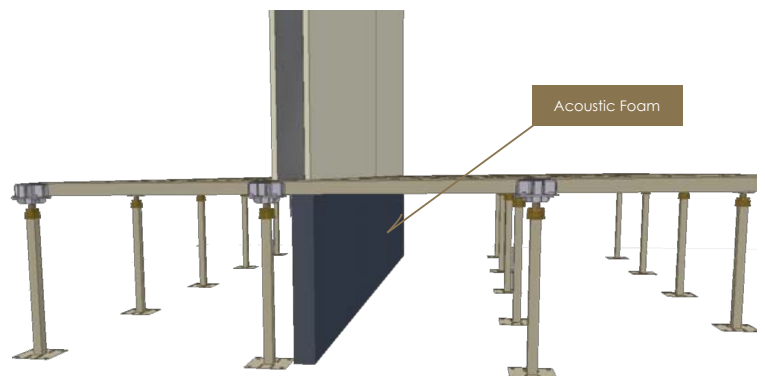
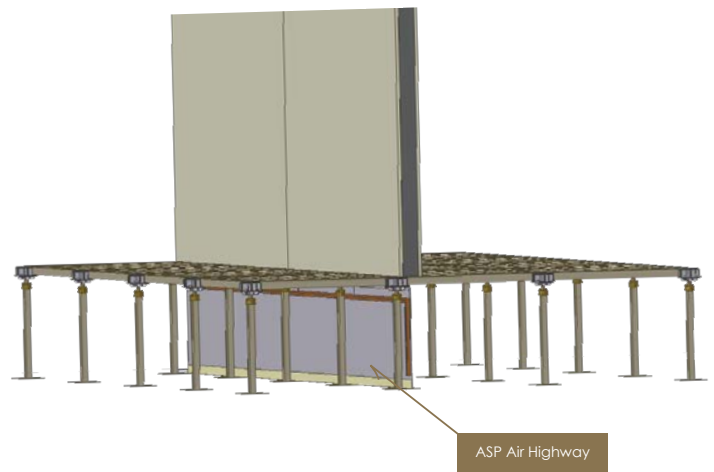


Where access floor panels are used as surface finish and underfloor obstruction prevent the use of pedestals, fibrous cement can be used to support the panel as well as maintaining the floor level.

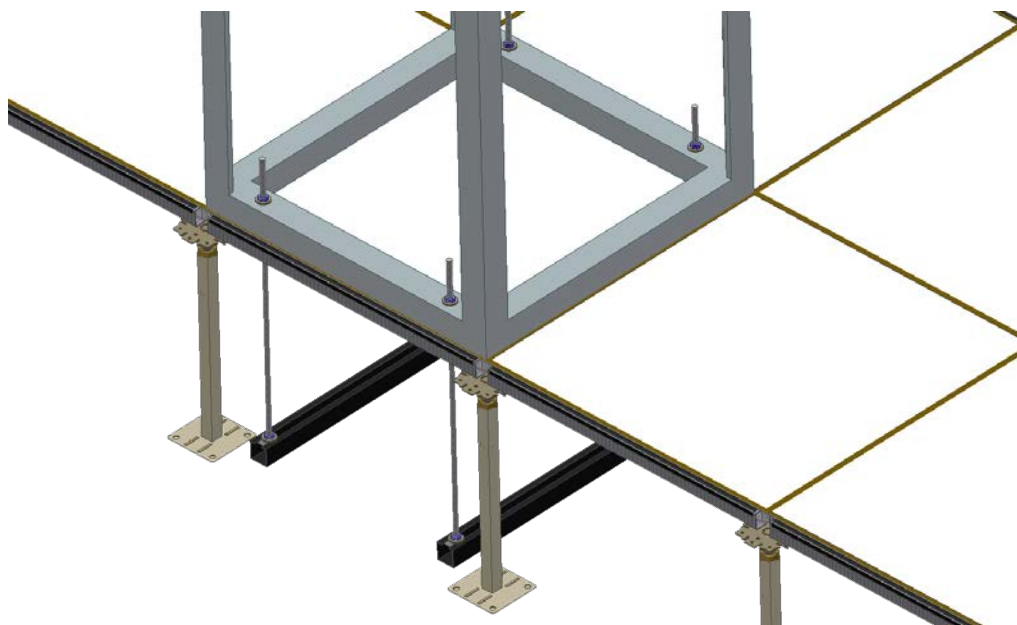


Air Highway and Acoustic Baffle

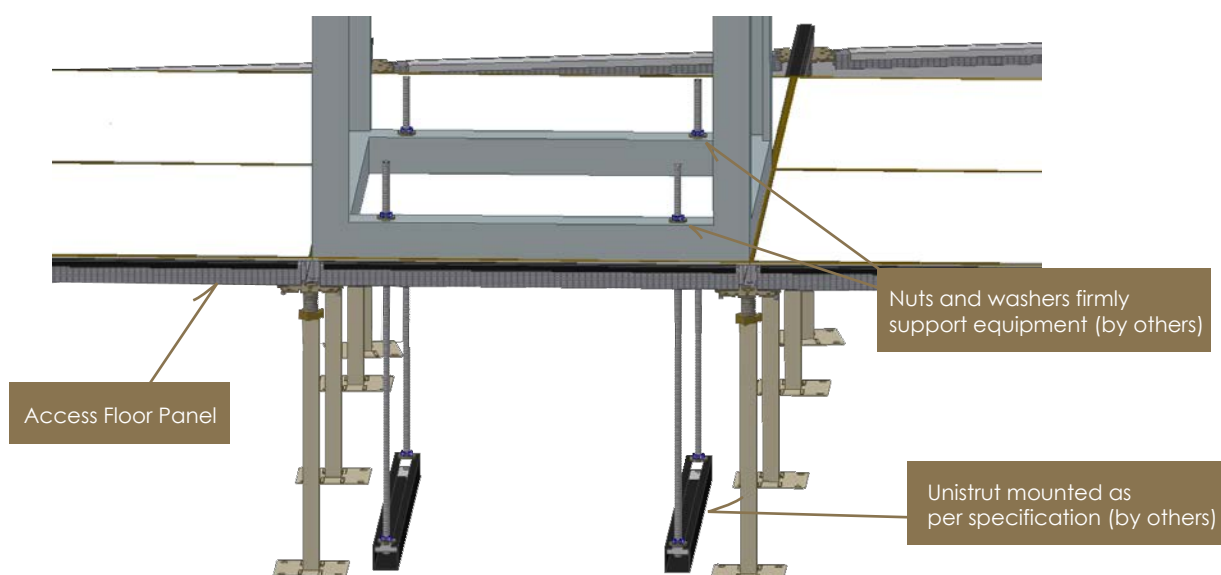
Integrating an air highway into the access floor system with sound absorbing foam allows for underfloor areas to be separated by a physical barrier, allowing for more privacy.



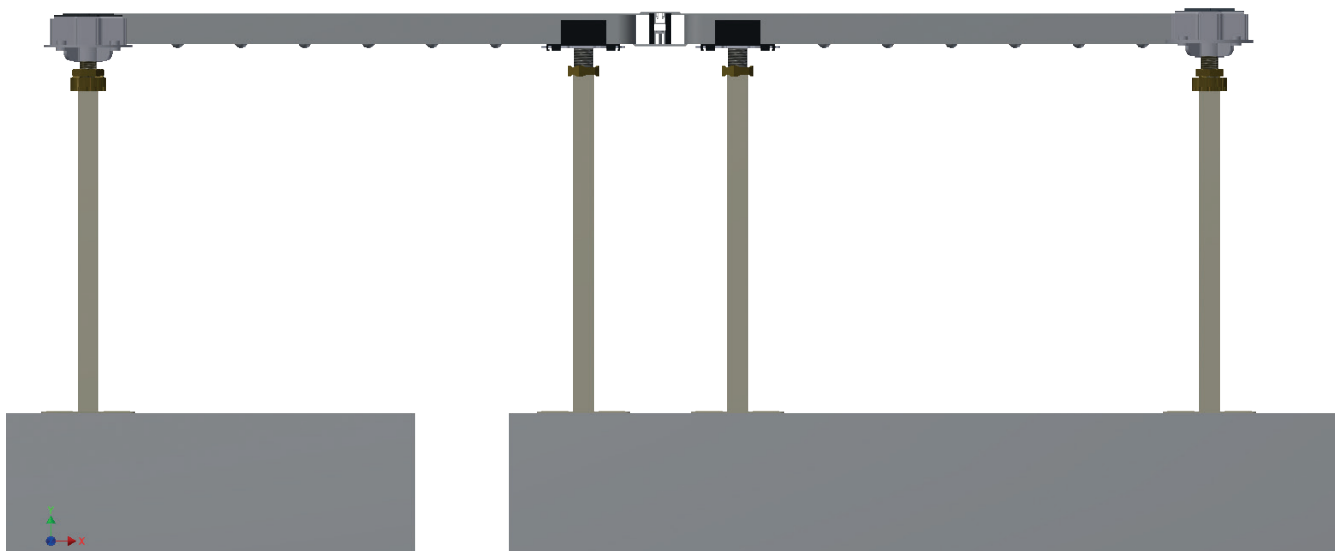
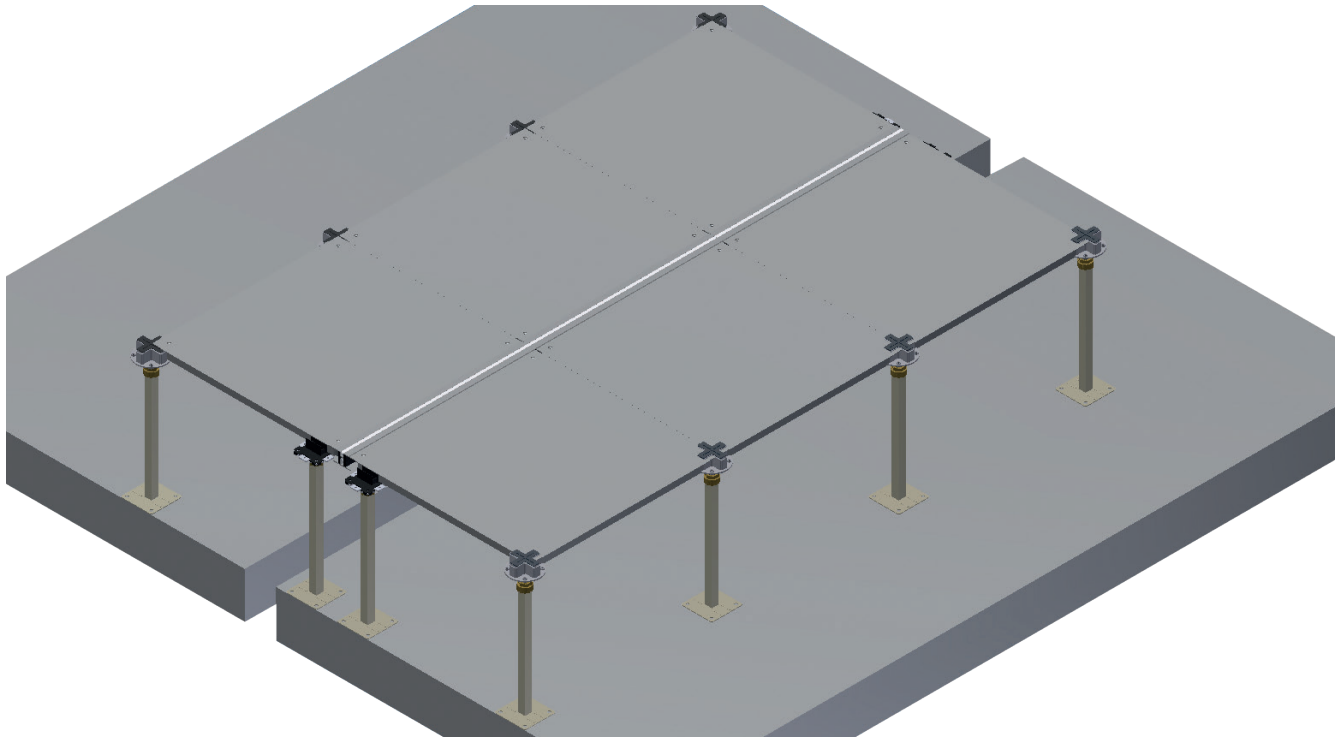
Bolting Equipment to Sub Floor



Where there is the possibility of equipment overturning on the access floor, it is recommended that this equipment is mounted to the subfloor using the method shown here.



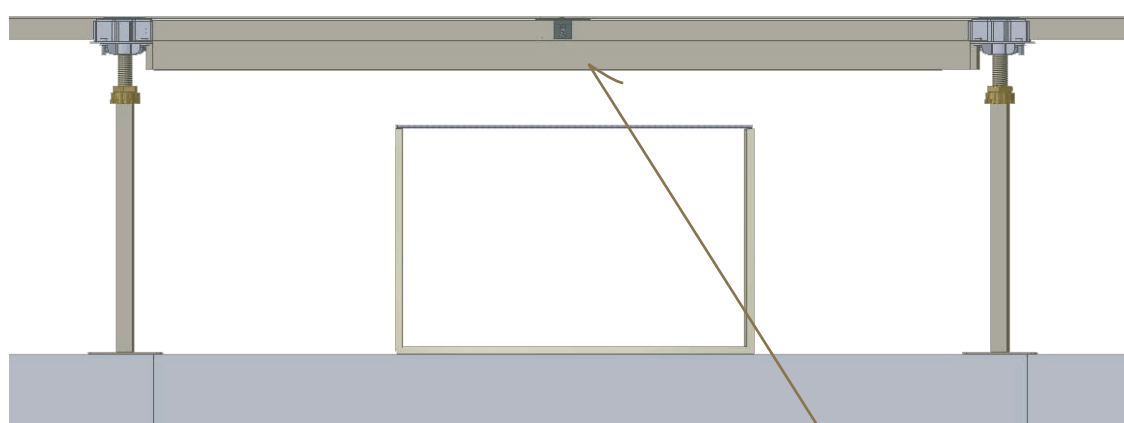
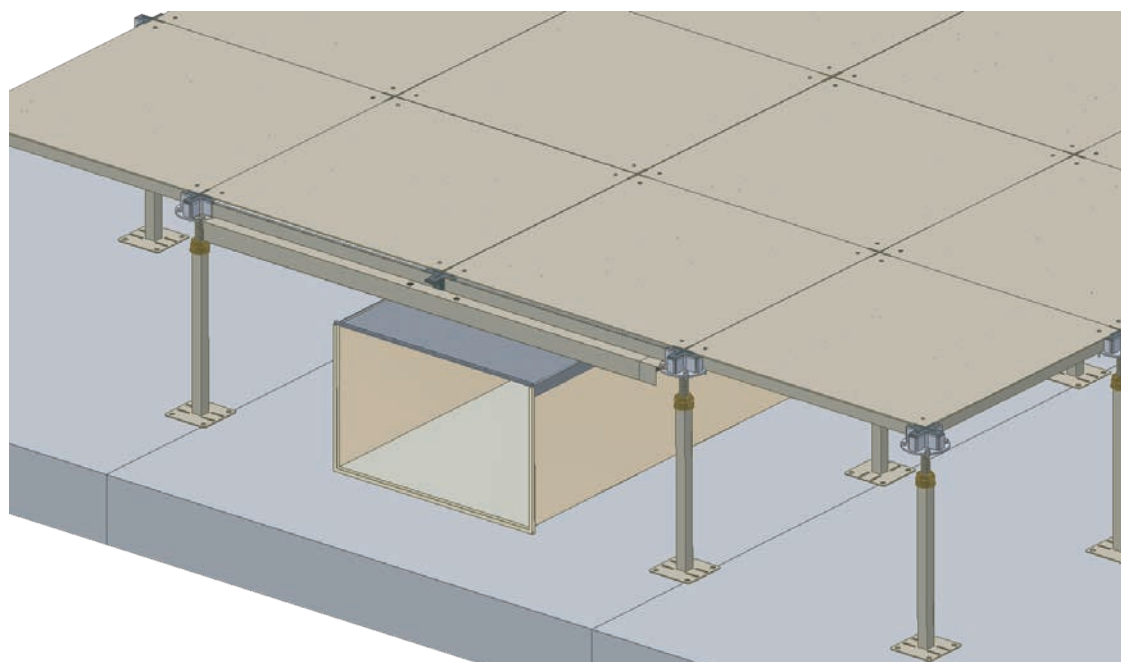
Bridging Obstructions: Bridging over Construction Joints



Bridging Obstructions: Bridging Wide Obstructions on Subfloor

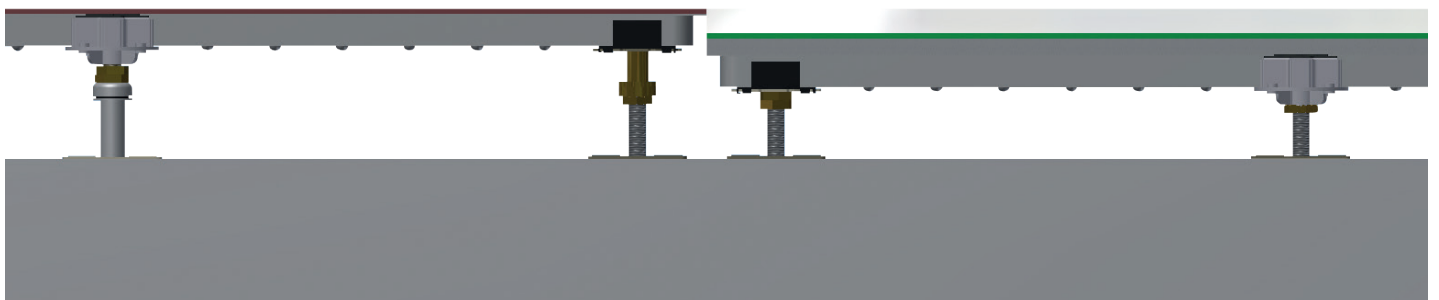
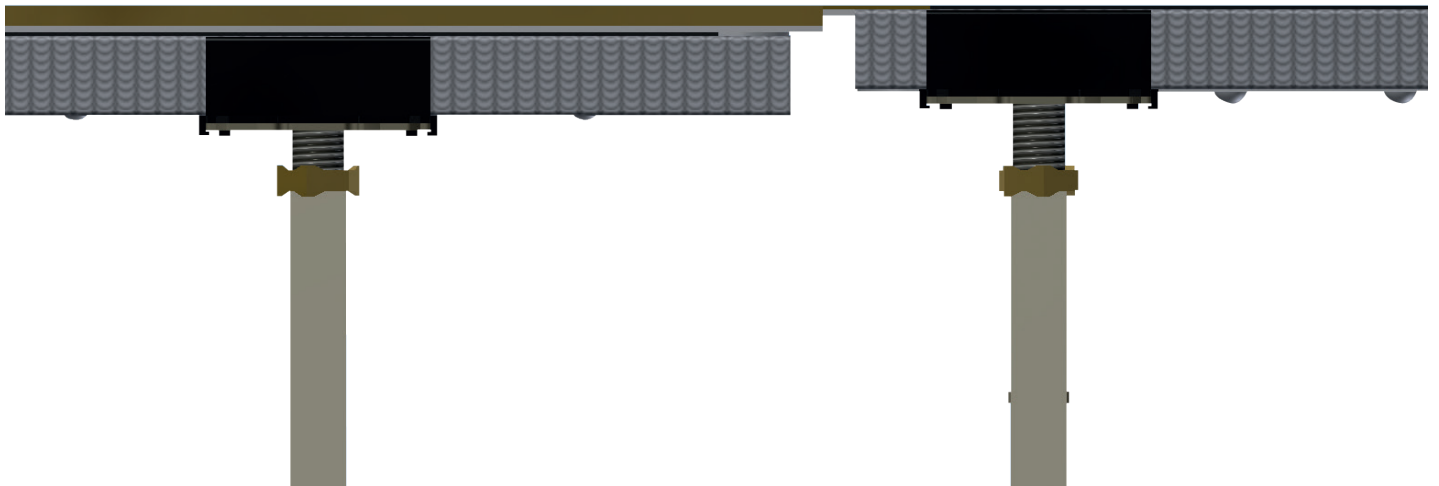
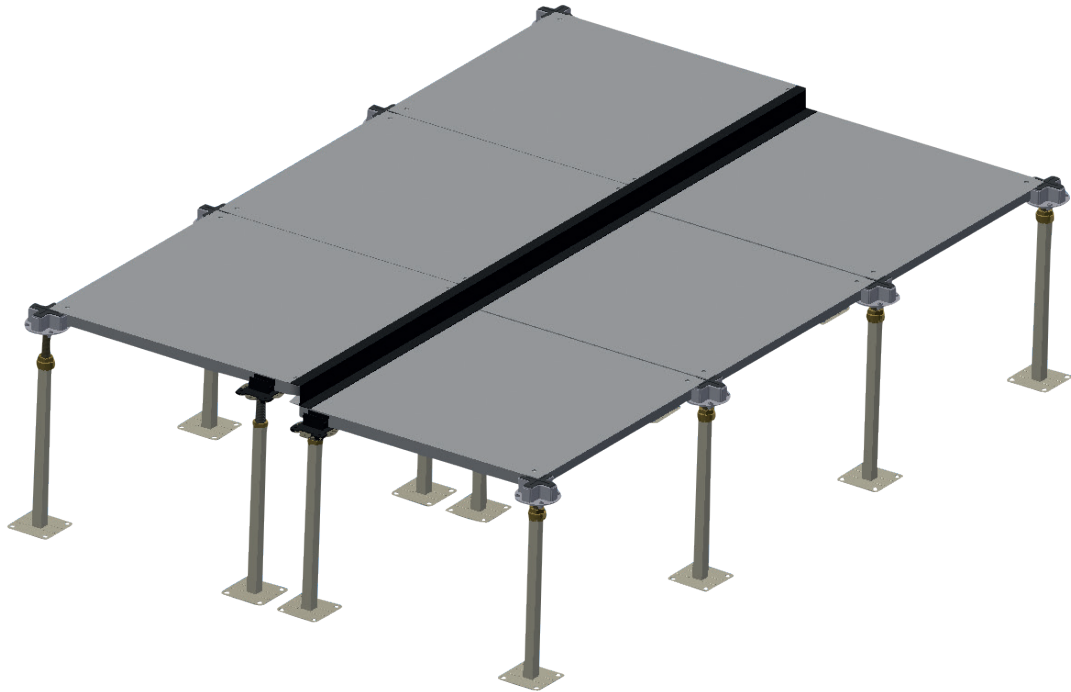
The use of bridging stringers allows the access floor to cross obstructions such as ducts, etc without interfering with the system grid and underfloor services and still able to maintain the load bearing characteristics of the system.

Please refer to earlier chapters for specific bridging stringer solutions required.

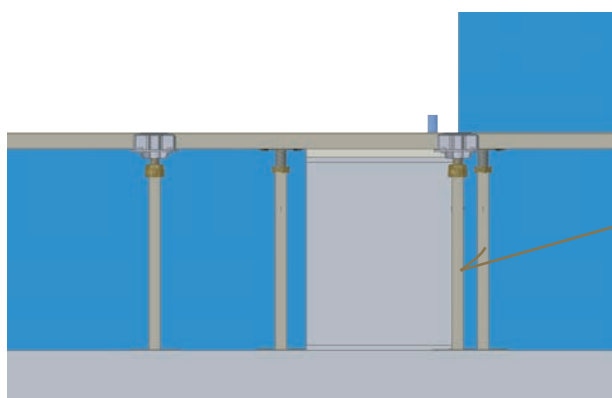
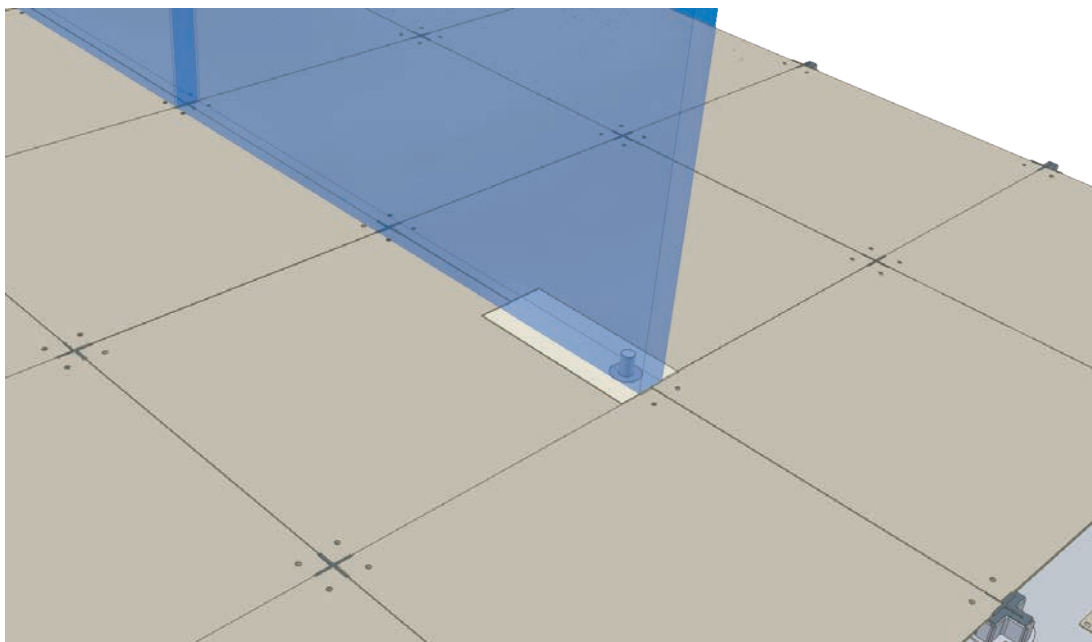


Bridging Stringer
spanning 1200mm

Varied FFH to allow for different floor finishes

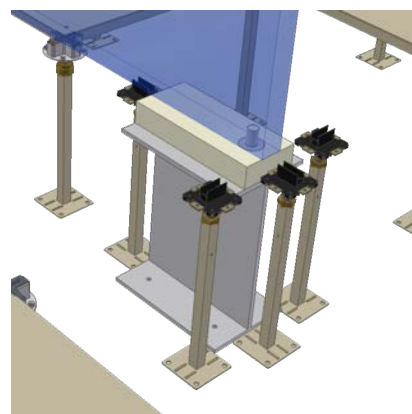


Access Floor Interface at Glass Door

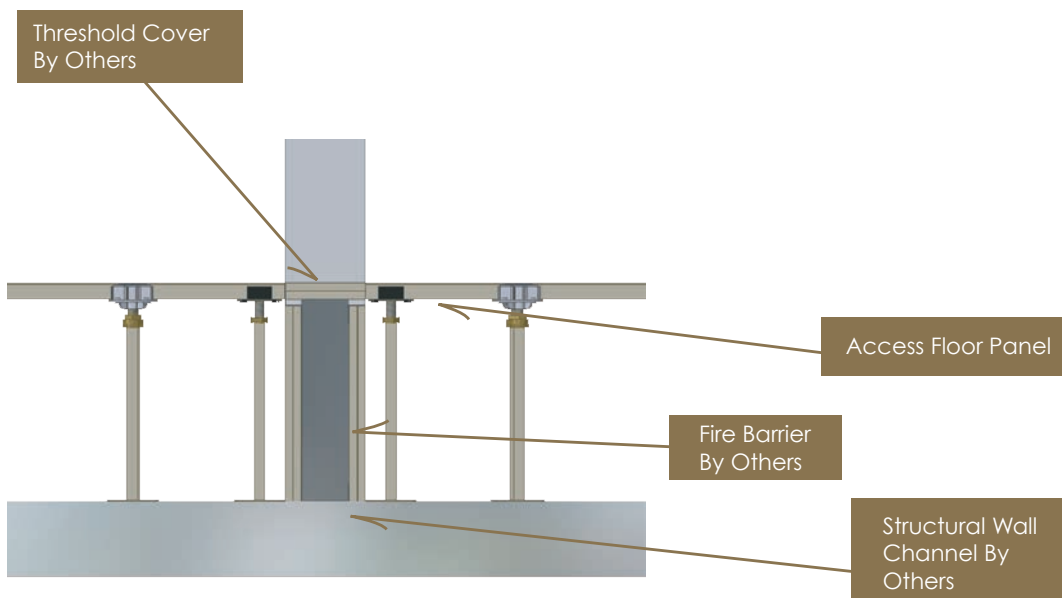
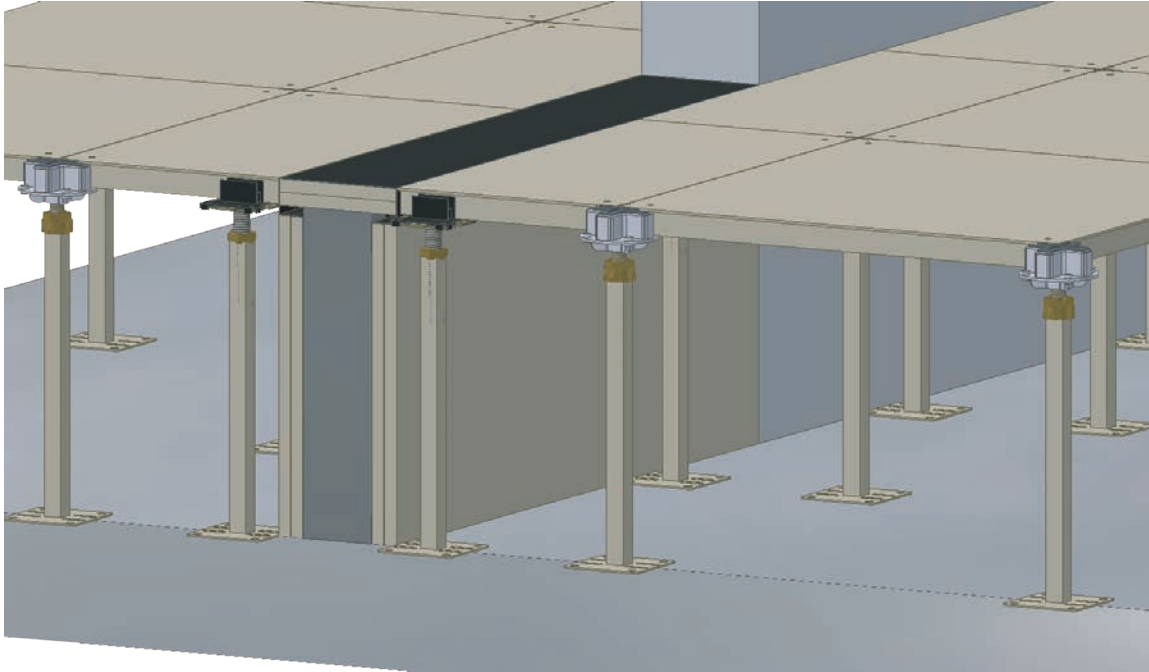


Structural Steel Stand
By Others

The introduction of perimeter pedestals around the door help support panels that have been cut to suit the door detail.



Fire Rated Door Threshold





Global Head Office

ASP Access Floors Pty Ltd
32 Prime Drive
Seven Hills, NSW 2147, Australia
Tel: +61 2 9620 9915
Fax: +61 2 9620 9918

www.aspfloors.com.au

Australia

ASP Access Floors Pty Ltd
32 Prime Drive
Seven Hills, NSW 2147, Australia
Tel: +61 2 9620 9915
Fax: +61 2 9620 9918

CS Access Systems
27 Furniss Rd
Landsdale, WA 6065, Australia
Tel: +61 437 801 702
Fax: +61 8 9403 4381

International Offices

ASP Access Floors - New Zealand

D21 930 Grt South Rd
Penrose, Auckland
Tel: +64 9 443 0864
Fax: +64 9 444 8625

ASP Access Floors - United Kingdom

Unit 4, Ghyll Industrial Estate
Heathfield, East Sussex, TN21 8AW
Tel: +44 (0) 1435 865 120

AIM – Vietnam

Kim Do Building, Suite 404,
123 Le Loi Boulevard,
District 1, HCMC, Vietnam
Tel: +84 8 3821 8085
Fax: +84 8 3821 8086
www.aimup.com



**PROUDLY
AUSTRALIAN
OWNED**



green building council australia
MEMBER 2014-2015