

System Overview

Steel Cementitious Panel
HPL/ Vinyl System

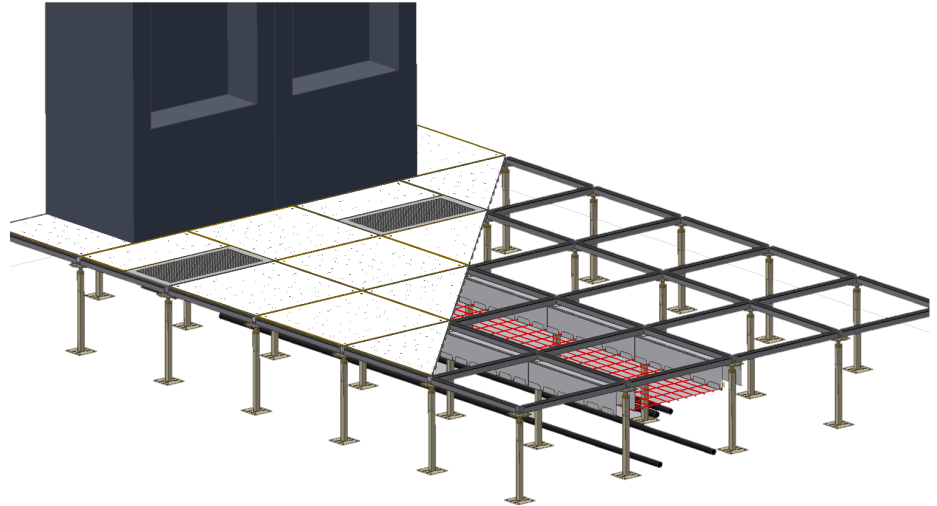
Steel Cementitious Panel - SC HPL System

The SC HPL System is designed for those applications used for computer/data/comms switch room applications incorporating a 1.6mm thick anti-static HPL covering.

The HPL protects individuals from voltage shorts that can occur with electrical equipment on an access floor and also creates an electrostatic discharge which helps prevent buildup of the static electricity which can cause damage to the equipment.

System Applications:

- Switch/Data/Comms/Computer Room environment like applications



Design Features

Gravity Fixed Panels

Panels are gravity fixed to the understructure with stringers providing location and extra strength.

HPL Finish

1.6mm high pressure laminate finish applied to panel in ASP standard finish. Custom and specialised HPL colours available upon request. The HPL panel is then finished with a brown edge, which is designed to eliminate panel chipping and delamination.

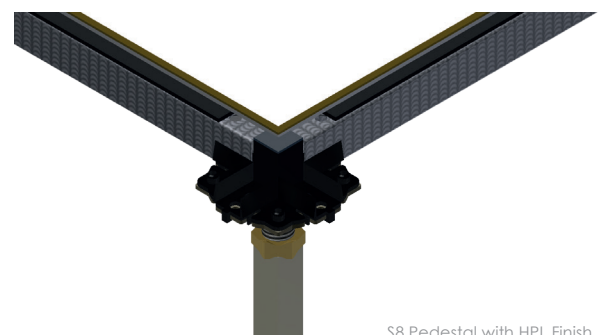
Powder Coating, Nickel Plating and Hot Dipped Galvanised Stringers

For specialised sensitive areas such as clean rooms and data centres, ASP has introduced powder coated panels and pedestal tube's as well as nickel chrome plated pedestal heads, threaded rod and nuts. The stringers are hot dipped galvanised. This specialised finish is available upon request.

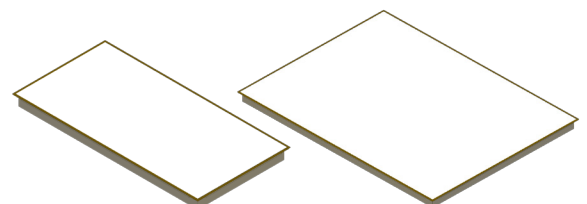
Finishing Panels

Full bearing 600 x 300mm and 600 x 800mm panels designed to minimise small off cuts experienced with cutting around equipment and finishing off to the perimeter.

The 600 x 300mm panel may also be used when there is a necessity for a 300 x 600mm air grille.



S8 Pedestal with HPL Finish



Finishing Panels

System Understructure

Cementitious HPL S8 System SC-HPL-RG S8 110-1200mm FFH

The SC HPL S8 system has been designed for applications with a FFH of 110-1200mm.

The pedestal tubes are manufactured or cut down to the appropriate length, and the steel thread rod is adjusted and locked at the desired height.

Understructure

- S8 Field/Perimeter Pedestal
- SC - S600 Stringer

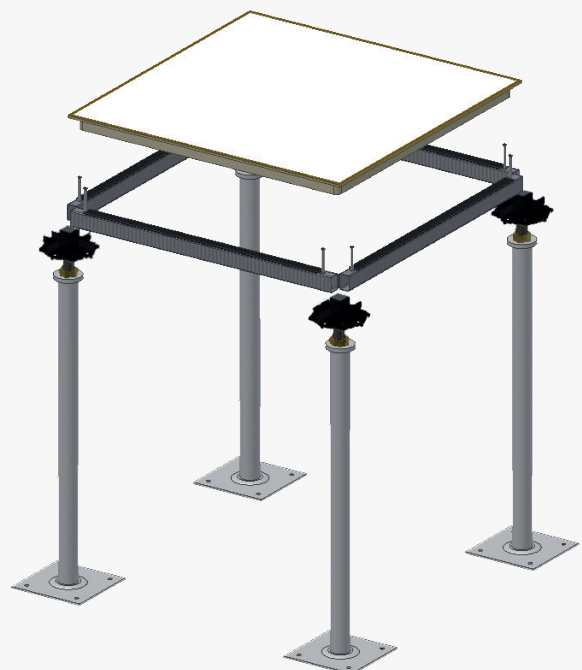


Cementitious HPL Heavy Duty S11 System SC-HPL-RG S11 1200mm + FFH

The S11 System incorporates a thicker, sturdier heavy duty pedestal base and tube to suit seismic and FFH over 1200mm.

Understructure

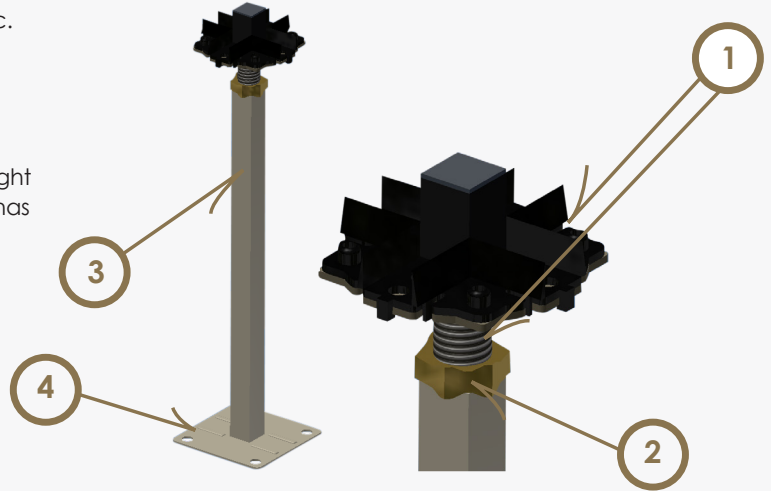
- S11 Field/Perimeter Pedestal
- SC S600 Stringer



System Understructure (cont...)

S8 Field/Perimeter Pedestal

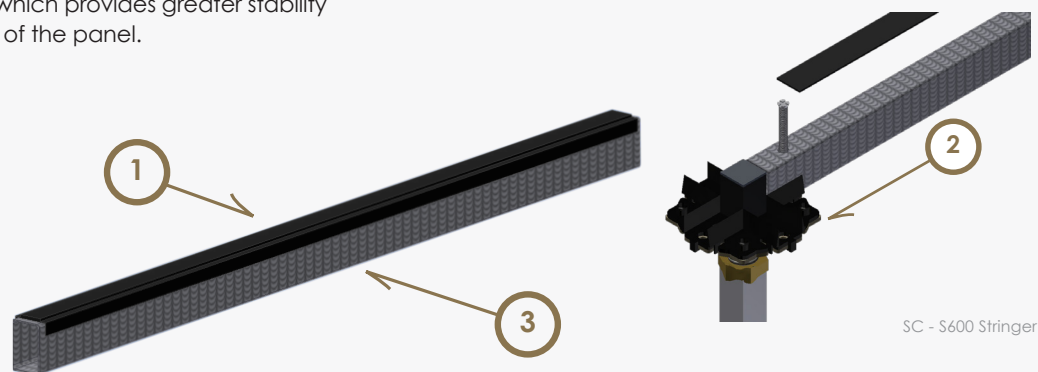
1. **Pedestal Head and welded steel thread rod**
 90 x 90mm steel flat head pedestal designed to provide a solid base for the panel. A 18mm by 150mm steel thread rod that is welded onto the bottom of the pedestal head with an adjustment range of 50mm +/- from the FFH.
2. **Adjusting and locking nut**
 Nut has an inbuilt vibration proof locking device, to ensure that once locked the pedestal height is static.
3. **Pedestal Tube**
 Pedestal tube provides rigidity and stability to steel thread rod.
4. **Pedestal Base**
 100 x 100mm pedestal base that provides a solid weight bearing platform for the access floor. Pedestal base has 4 fixing holes.



S8 Field/Perimeter Pedestal

SC - S600 Stringer

1. **Sponge Rubber**
 1.6mm thick sponge rubber to eliminate metal on metal noise transfer and assist with air leakage when sub floor is used as an air plenum.
2. **Screw Holes**
 Pre-drilled screw holes to be used in conjunction with pedestal head to form a rigid grid understructure system.
3. **Steel**
 1.4mm thick steel stringer, which provides greater stability and strength at the edges of the panel.



SC - S600 Stringer

Load Tolerances - For 600 x 600 standard panels and specialised finishing panels

Heavy Grade Panel SC 4.5kN

Suitable for office areas where heavy equipment is being used such as compactus zones, printer zones, communication rooms and server rooms. Also recommended for high traffic areas such as lift lobbies and corridors.

Extra Heavy Grade SC 6.0kN

Suitable for data centres and other areas of heavy traffic and more regular rolling loads.

Industrial Grade SC 9.0kN (CISCA Standard)

Recommended for areas of frequent heavy rolling loads such as casinos and data centre corridors.

Heavy Industrial Grade SC 11kN (CISCA Standard)

Recommended for areas of heavy dead loads, high regular live rolling loads or high impact load areas such as car showrooms and gym weights zones.

Testing Data:

1. The above results have been obtained from independent testing and have been tested in accordance to AS4154-1993 (General Access Floor (Elevated Floors)) and CISCA strict guidelines and regulations.
2. As stated in the standards, the above mentioned panel deflection must not exceed 2.4mm (1/5") based on a 24hr testing. In addition to this the above working loads for each panel carries a safety factor of 3 x the working load.

All ASP products are thoroughly tested and certified by qualified engineers. If you require further information please contact the technical team at ASP on (02) 9620 9915 or visit our contact page on www.aspfloors.com.au

High Pressure Laminate



Standard Stock Colour 8192



8194



8193



8191



8132



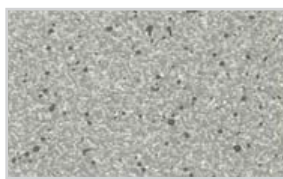
8144



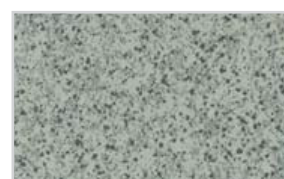
8137



8119



8138



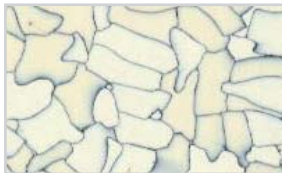
8117

Anti-Static Vinyl

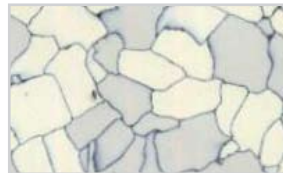
Subject to availability. Minimum quantities and lead times apply.



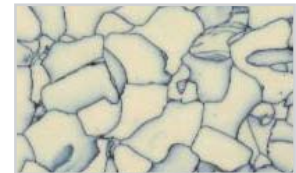
6101



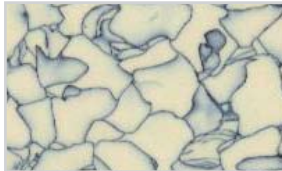
9103



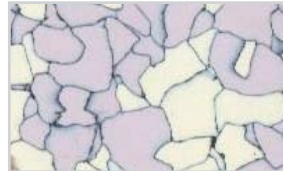
9101



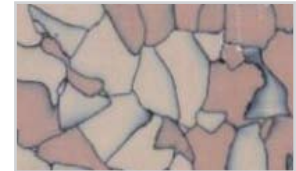
601



9102



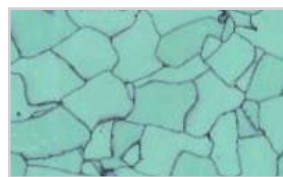
9104



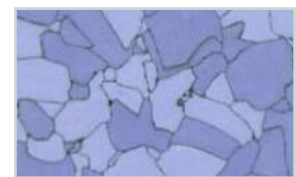
9131



6111



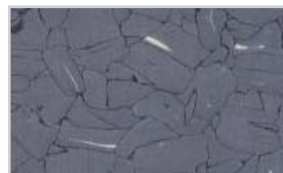
9081



9105



6200



6061

Specified Finishes

ASP Access Floors are able to prefinish our range of panels in a variety of materials specified by you. These finishes may include but are not limited to vinyl, stone, tiles, timber or laminate.

For further information please enquire with the ASP Sales Team.

Phone 02 9620 9915 **Email** sales@aspfloors.com.au

Global Head Office

ASP Access Floors Pty Ltd
32 Prime Drive
Seven Hills, NSW 2147, Australia
Tel: +61 2 9620 9915
Fax: +61 2 9620 9918

www.aspfloors.com.au

Australia

ASP Access Floors Pty Ltd
32 Prime Drive
Seven Hills, NSW 2147, Australia
Tel: +61 2 9620 9915
Fax: +61 2 9620 9918

CS Access Systems

27 Furniss Rd
Landsdale, WA 6065, Australia
Tel: +61 437 801 702
Fax: +61 8 9403 4381

International Offices

ASP Access Floors - New Zealand

D21 930 Grt South Rd
Penrose, Auckland
Tel: +64 9 443 0864
Fax: +64 9 444 8625

ASP Access Floors - United Kingdom

Unit 4, Ghyll Industrial Estate
Heathfield, East Sussex, TN21 8AW
Tel: +44 (0) 1435 865 120

AIM – Vietnam

Kim Do Building, Suite 404,
123 Le Loi Boulevard,
District 1, HCMC, Vietnam
Tel: +84 8 3821 8085
Fax: +84 8 3821 8086
www.aimup.com



**PROUDLY
AUSTRALIAN
OWNED**



green building council australia
MEMBER 2014-2015