

## System Overview

Steel Cementitious Panel  
SC Rigid Grid System

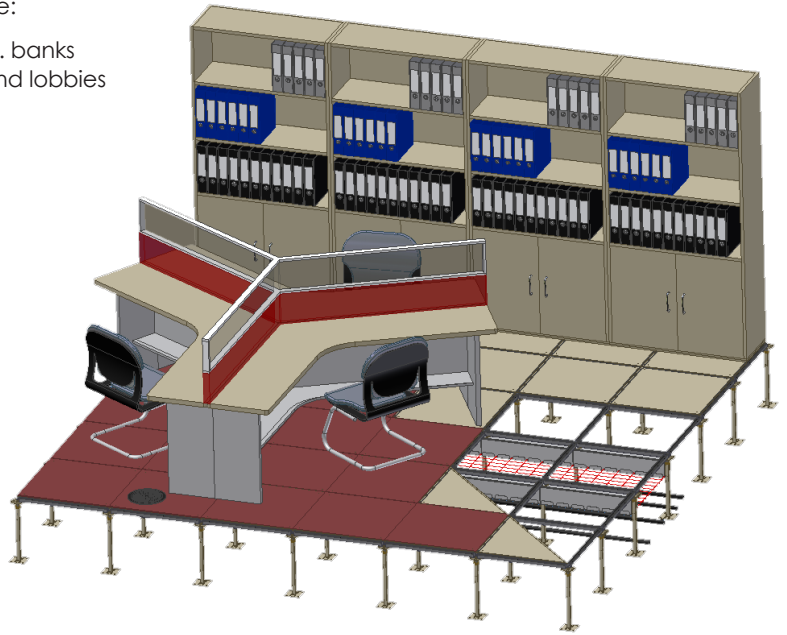
## Steel Cementitious Panel - SC Rigid Grid System

This system as the name suggests has a permanently fixed rigid grid understructure made up from the pedestals and stringers. The stringers are screw fixed onto the pedestal heads forming a perfect 600 x 600mm square grid.

### System Applications:

The SC rigid grid system is designed for applications where:

- There will be constant rolling activity on the floor: i.e. banks
- General high load and traffic areas: i.e. Corridors and lobbies
- Panel loading is 11kN and over



## Design Features

### Gravity Fixed Panels when Prefinished

Panels are gravity fixed to the understructure with stringers providing location and extra strength.

### 4 Corner Screw Panel when Bare Finish

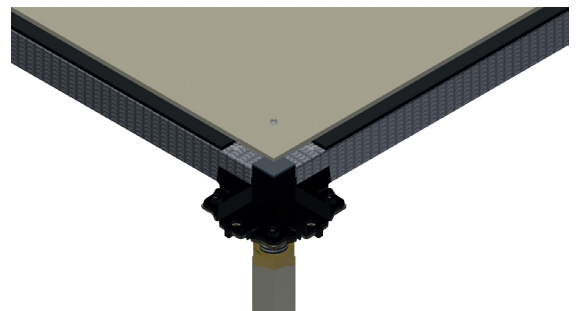
Screw hole in each corner allows the panels to be individually screw fixed providing greater rigidity.

This system can be gravity fixed or can be gravity and screw fixed.

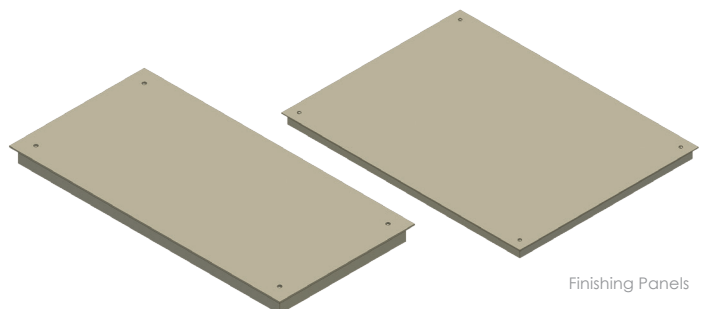
### Finishing Panels

Full bearing 600 x 300mm and 600 x 800mm panels designed to minimise small off cuts, experienced when cutting around columns and finishing off to the perimeter.

The 600 x 300mm panel may also be used when there is a necessity for a 300 x 600mm air grille.



4 Corner Screw Panel



Finishing Panels

## System Understructure

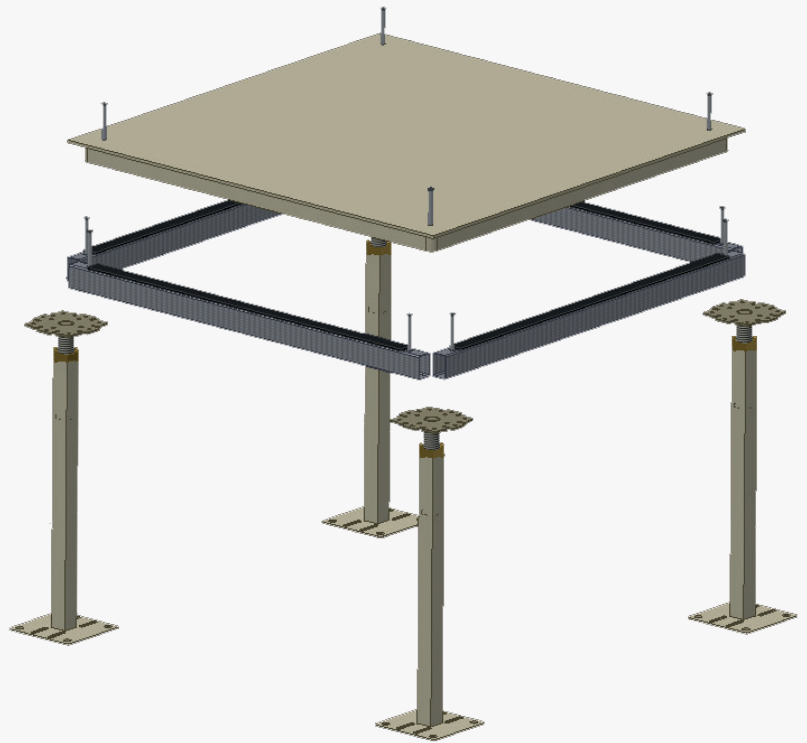
### Rigid Grid S8 System SC-RG S8 110-1200mm FFH

The SC S8 Rigid Grid system has been designed for applications with a FFH of 110-1200mm.

The pedestal tubes are manufactured or cut down to the appropriate length, and the steel thread is adjusted and locked at the desired height.

#### Understructure

- S8 Field/Perimeter Pedestal
- SC 600 Stringer

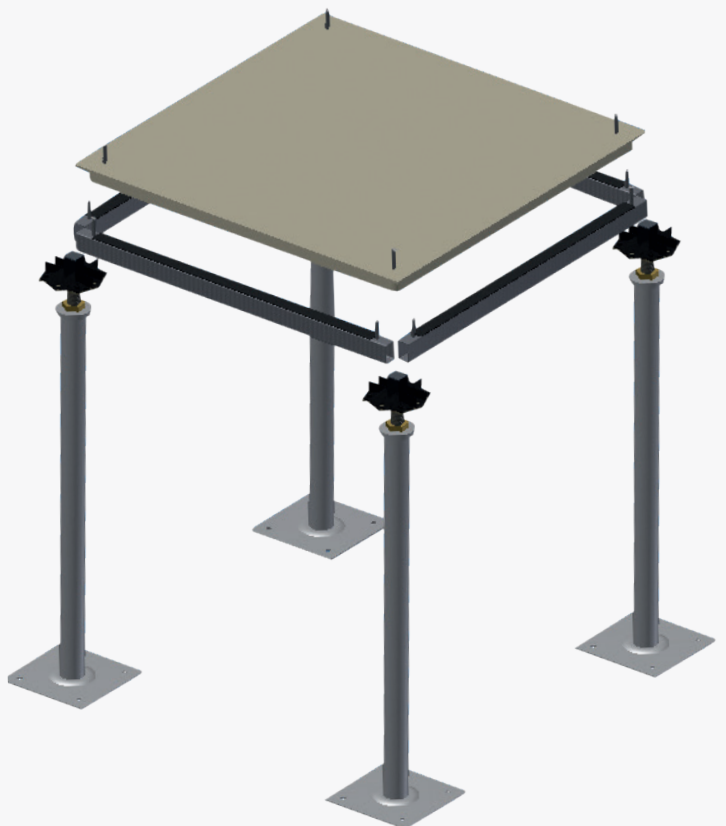


### Rigid Grid S11 System SC-RG-S11 1200mm + FFH

The S11 System incorporates a thicker, sturdier heavy duty pedestal base and tube to suit seismic requirements and FFH over 1200mm.

#### Understructure

- S8 Field/Perimeter Pedestal
- SC 600 Stringer



## S8 Field/Perimeter Pedestal

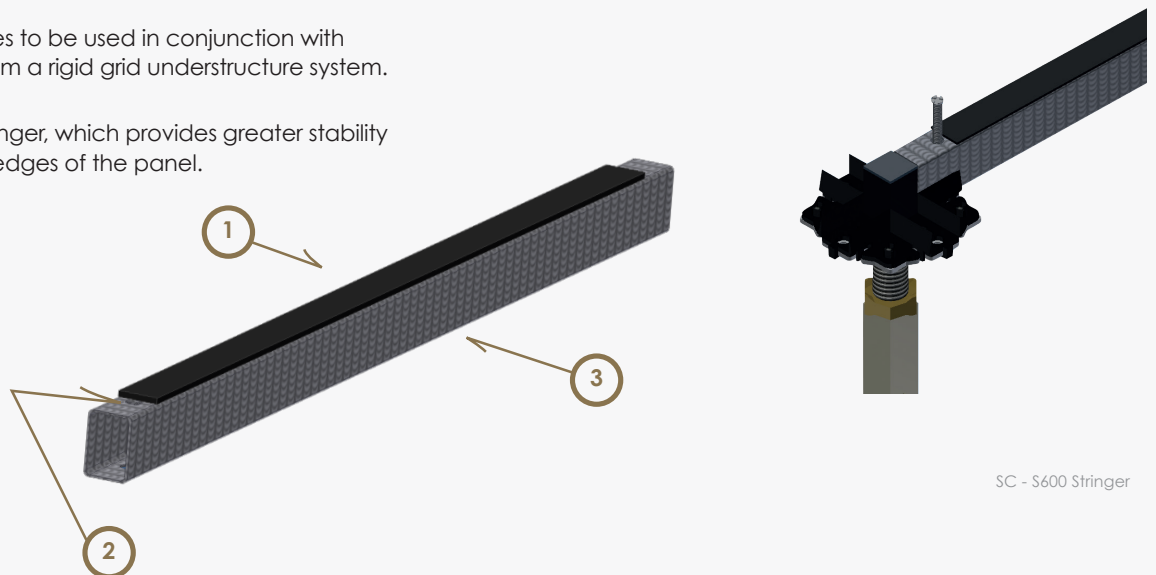
1. **Pedestal Head and welded steel thread rod**  
90 x 90mm steel flat head pedestal designed to provide a solid base for the panel. A 18mm by 150mm steel thread rod that is welded onto the bottom of the pedestal head with an adjustment range of 50mm +/- from the FFH.
2. **Adjusting and locking nut**  
Nut has an inbuilt vibration proof locking device, to ensure that once locked the pedestal height is static.
3. **Pedestal Tube**  
Pedestal tube provides rigidity and stability to steel thread rod.
4. **Pedestal Base**  
100 x 100mm pedestal base that provides a solid weight bearing platform for the access floor. Pedestal base has 4 fixing holes.



S8 Field/Perimeter Pedestal

## SC - S600 Stringer

1. **Sponge Rubber**  
1.6mm thick sponge rubber to eliminate metal on metal noise transfer and assist with air leakage when sub floor is used as an air plenum.
2. **Screw Holes**  
Pre-drilled screw holes to be used in conjunction with pedestal head to form a rigid grid understructure system.
3. **Steel**  
1.4mm thick steel stringer, which provides greater stability and strength at the edges of the panel.



SC - S600 Stringer

## Load Tolerances - For 600 x 600 standard panels and specialised finishing panels

### Medium Grade Panel SC 3.0kN

The medium grade panel is the first panel in the Australian Standards and is suitable for general office areas and educational centres where heavy equipment is not used.

### Heavy Grade Panel SC 4.5kN

Suitable for office areas where heavy equipment is being used such as compactus zones, printer zones, communication rooms and server rooms. Also recommended for high traffic areas such as lift lobbies and corridors.

### Extra Heavy Grade SC 6.0kN

Suitable for data centres and other areas of heavy traffic and more regular rolling loads.

### Industrial Grade SC 9.0kN (CISCA Standard)

Recommended for areas of frequent heavy rolling loads such as casinos and data centre corridors.

### Heavy Industrial Grade SC 11kN (CISCA Standard)

Recommended for areas of heavy dead loads, high regular live rolling loads or high impact load areas such as car showrooms and gym weights zones.

#### Global Head Office

**ASP Access Floors Pty Ltd**  
32 Prime Drive  
Seven Hills, NSW 2147, Australia  
Tel: +61 2 9620 9915  
Fax: +61 2 9620 9918

[www.aspfloors.com.au](http://www.aspfloors.com.au)

#### Australia

**ASP Access Floors Pty Ltd**  
32 Prime Drive  
Seven Hills, NSW 2147, Australia  
Tel: +61 2 9620 9915  
Fax: +61 2 9620 9918

#### CS Access Systems

27 Furniss Rd  
Landsdale, WA 6065, Australia  
Tel: +61 437 801 702  
Fax: +61 8 9403 4381

#### International Offices

##### ASP Access Floors - New Zealand

D21 930 Grt South Rd  
Penrose, Auckland  
Tel: +64 9 443 0864  
Fax: +64 9 444 8625

##### ASP Access Floors - United Kingdom

Unit 4, Ghyll Industrial Estate  
Heathfield, East Sussex, TN21 8AW  
Tel: +44 (0) 1435 865 120

##### AIM – Vietnam

Kim Do Building, Suite 404,  
123 Le Loi Boulevard,  
District 1, HCMC, Vietnam  
Tel: +84 8 3821 8085  
Fax: +84 8 3821 8086  
[www.aimup.com](http://www.aimup.com)



**PROUDLY  
AUSTRALIAN  
OWNED**



green building council australia  
MEMBER 2014-2015