

System Overview

Steel Cementitious Panel
Ultrafix System

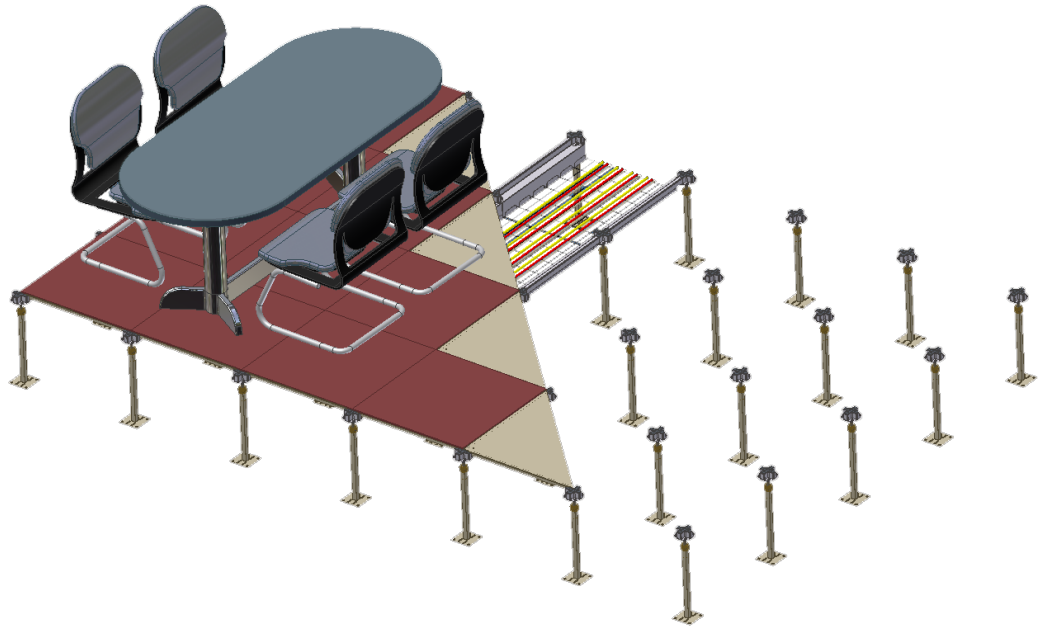
Steel Cementitious Panel - SC Ultra Fix System

The SC Ultra fix panel is the most specified panel which is regarded as the standard system for general office like applications. This is a stringer less system where the panels are screw fixed onto the pedestal heads.

This system is widely used for power and data cable management, and also for applications where there is a need for an under floor baffle/plenum or air highway.

System Applications:

- General Offices
- Banks
- Learning Institution
- Libraries
- Casinos



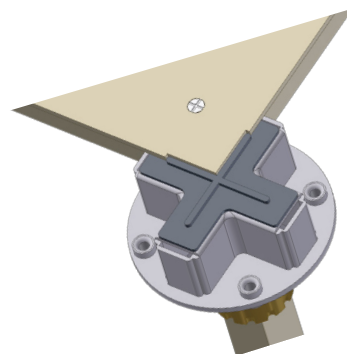
Design Features

In-built Expansion Joint and Cut Out

The panel has a special expansion cut out, and the pedestal head is fitted with an expansion gasket designed to keep the panels separated by 0.3mm at all times. This eliminates panel to panel contact noise.

4 Corner Screw Panel

Screw holes in each corner to allow panels to be individually screw fixed providing greater rigidity as well as easier and faster access.

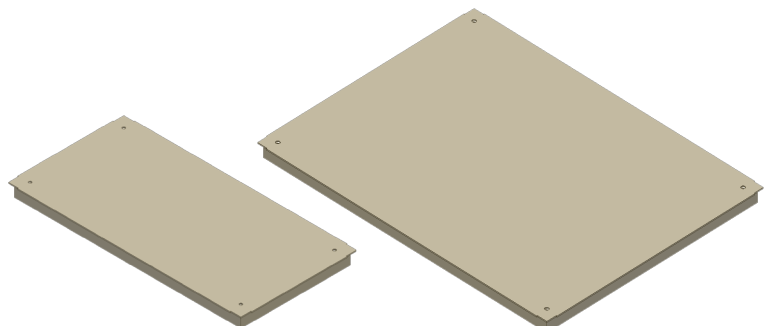


4 Corner Screw Panel

Finishing Panels

Full bearing 600 x 300mm and 600 x 800mm panels designed to minimise small off cuts experienced with cutting around columns and finishing off to the perimeter.

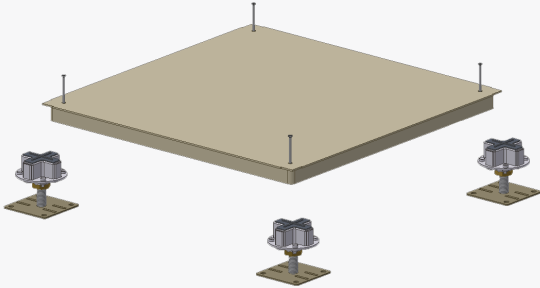
The 600 x 300mm panel may also be used when there is a necessity for a 300 x 600mm air grille.



Finishing Panels

System Understructure

Steel Cementitious Ultra Fix S1/S2 System SC-UF S1/2 50-110mm FFH



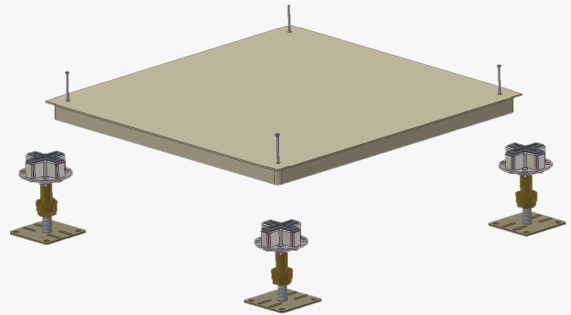
The SC-S1/2 Ultra Fix system has been designed for those low profile applications with a FFH 50-100mm.

The pedestal height is adjusted by turning the steel thread rod up or down to the desired height.

Understructure

- S1 Field Pedestal
- S2 Perimeter Pedestal

Steel Cementitious Ultra Fix S3/S4 System SC-UF S3/4 110-180mm FFH



The SC S3/4 Ultra Fix system has been designed for low profile applications with a FFH 110-180mm.

The pedestal height is adjusted by screwing the specialised shaft up or down to the desired height.

Understructure

- S3 Field Pedestal
- S4 Perimeter Pedestal

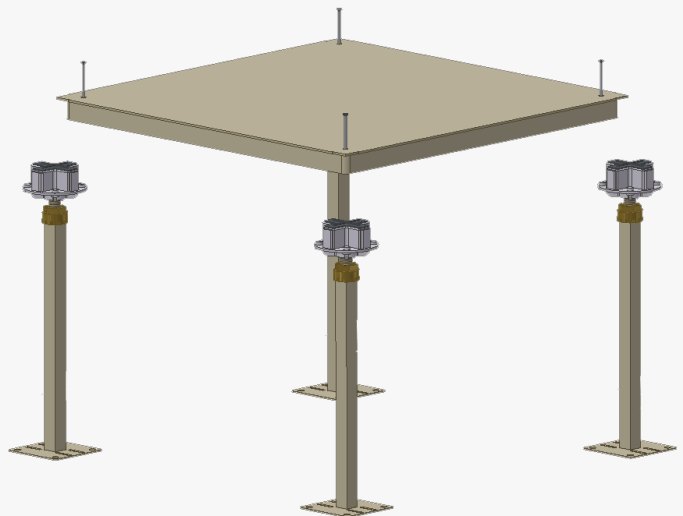
Steel Cementitious Ultra Fix S5/S6 System SC-UF S5/6 180-800mm FFH

The SC S5/6 Ultra Fix system has been designed for applications with a FFH 180-1200mm.

The pedestal tubes are manufactured or cut down to the appropriate length, and the steel thread rod is adjusted and locked at the desired height.

Understructure

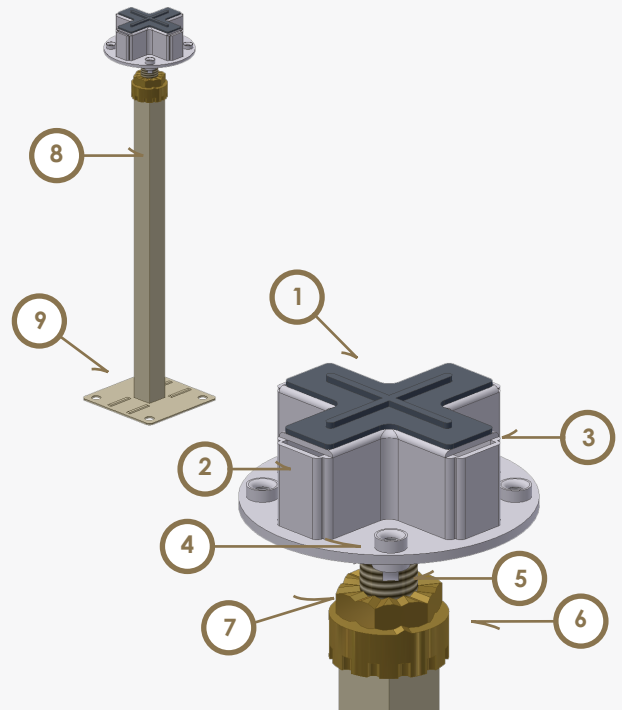
- S5 Field Pedestal
- S6 Perimeter Pedestal



For heights over 800mm it is recommended to use the Rigid Grid System

Field Pedestal

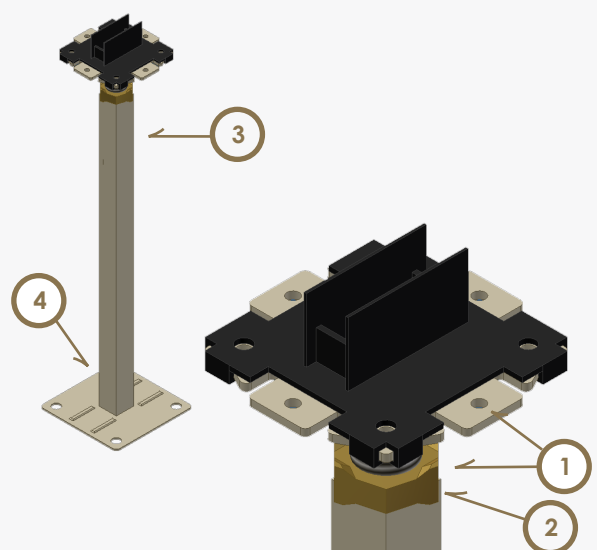
1. **Inbuilt Expansion joint gasket**
This patented inbuilt expansion joint gasket detail ensures that the panels are held 0.3mm apart
2. **Pedestal Head**
Pedestal Head is die formed aluminium to form a solid support to mount the access floor to
3. **Clip on AT stringer cavity**
Cavity for AT stringer attachment
4. **Screw Fix Locator**
The panel is screw fixed through this locator on every corner
5. **Steel thread rod**
18mm x 150mm steel thread rod that gives a range of adjustment from 50mm +/- from the FFH
6. **Sound Impact Buffer**
A sound and impact rubber washer encased in a steel housing pocket intended to eliminate metal on metal sound transfer to the slab
7. **Adjusting and locking nut**
Adjustment: Nut can adjust to the required length of the steel thread rod
Locking: Nut has an inbuilt vibration proof locking device, to ensure that once locked the pedestal height is static
8. **Pedestal Tube**
Provides rigidity and stability to steel thread rod
9. **Pedestal Base**
100mm x 100mm pedestal base that provides a solid weight bearing platform for the access floor. Pedestal base has 4 fixing holes



Field Pedestal

Perimeter Pedestal

1. **Pedestal Head and Welded Steel Thread Rod**
90mm x 90mm steel flat head pedestal designed to provide a solid base for the panel, positioned as perimeter pedestals. A 18mm x 150mm steel thread rod that is welded onto the bottom of the pedestal head with an adjustment range of 50mm +/- from the FFH
2. **Locking Nut**
Nut has an inbuilt vibration proof locking device, to ensure that once locked the pedestal height is static
3. **Pedestal Tube**
Pedestal tube provides rigidity and stability to steel thread rod
4. **Pedestal Base**
100mm x 100mm pedestal base that provides a solid weight bearing platform for the access floor. Pedestal base has 4 fixing holes



Perimeter Pedestal

Load Tolerances - For 600 x 600 standard panels and specialised finishing panels

Medium Grade Panel SC 3.0kN

The medium grade panel is the first panel in the Australian Standards and is suitable for general office areas and educational centres where heavy equipment is not used.

Heavy Grade Panel SC 4.5kN

Suitable for office areas where heavy equipment is being used such as compactus zones, printer zones, communication rooms and server rooms. Also recommended for high traffic areas such as lift lobbies and corridors.

Extra Heavy Grade SC 6.0kN

Suitable for data centres and other areas of heavy traffic and more regular rolling loads.

Industrial Grade SC 9.0kN (CISCA Standard)

Recommended for areas of frequent heavy rolling loads such as casinos and data centre corridors.

Global Head Office

ASP Access Floors Pty Ltd
32 Prime Drive
Seven Hills, NSW 2147, Australia
Tel: +61 2 9620 9915
Fax: +61 2 9620 9918

www.aspfloors.com.au

Australia

ASP Access Floors Pty Ltd
32 Prime Drive
Seven Hills, NSW 2147, Australia
Tel: +61 2 9620 9915
Fax: +61 2 9620 9918

CS Access Systems

27 Furniss Rd
Landsdale, WA 6065, Australia
Tel: +61 437 801 702
Fax: +61 8 9403 4381

International Offices

ASP Access Floors - New Zealand

D21 930 Grt South Rd
Penrose, Auckland
Tel: +64 9 443 0864
Fax: +64 9 444 8625

ASP Access Floors - United Kingdom

Unit 4, Ghyll Industrial Estate
Heathfield, East Sussex, TN21 8AW
Tel: +44 (0) 1435 865 120

AIM – Vietnam

Kim Do Building, Suite 404,
123 Le Loi Boulevard,
District 1, HCMC, Vietnam
Tel: +84 8 3821 8085
Fax: +84 8 3821 8086
www.aimup.com



**PROUDLY
AUSTRALIAN
OWNED**



green building council australia
MEMBER 2014-2015